

The right temperature worldwide

LAUDA



Chapter ECO

LAUDA – the big one

Thermostats, Circulation chillers, Water baths

Overall Brochure 2016/2017

LAUDA ECO

Heating and cooling thermostats
Economical thermostating in the laboratory
from -50 up to 200 °C



Application examples

- Precise temperature regulation in quality assurance and analytics
- Sample preparation in chemistry and pharmacy
- Temperature control in electronics and life sciences
- Cooling in material tests

Precise, economical, flexible

The **LAUDA ECO** stands out due to its range of functionality and ease of use. A menu navigation in plain text allows easy operation of the devices. Both control heads are equipped with a mini-USB interface as standard. Further interfaces are available as modules. Another innovation is the practical allocation of a flow-rate switch at the front on the control head.

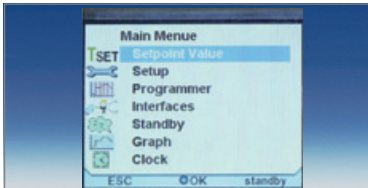
This means that individual adjustment of the flow between internal and external circulation is possible even during operation. Variants in 230 V; 50 Hz are available with natural refrigerants as standard. The most powerful units are equipped with the energy-saving LAUDA SmartCool system. All cooling thermostats are available as air-cooled or water-cooled variants.

Your advantages at a glance



The ECO advantages

Your benefits



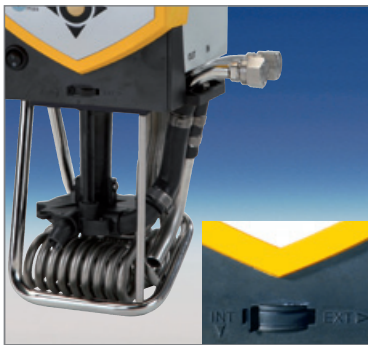
- Menu navigation via monochrome LCD (Silver) or colored TFT display (Gold)
- Programmer with both models

- Easy and clear operation
- Parameters are clearly readable
- Automation of temperature variations and test series



- Cooling outputs of 180, 200, 300 and 700 W and minimal temperature ranges from -15 up to -50 °C
- All cooling thermostats available as air and water cooled versions
- With natural refrigerants
- Energy-saving SmartCool System with 700 W cooling output

- Application related temperature control
- Choice of models regarding ambient conditions
- Very low global warming potential (GWP)
- Energy and cost savings with digital cooling management



- Strong circulation pump with six levels; flow rate switch placed at the front of the control head for internal or external circulation
- Pump connections as standard with cooling thermostats
- Cooling coil as standard with heating thermostats

- Adaptation of pump power to applications and different bath sizes
- Convenient working even at ambient temperature, without cooling
- Temperature control of external applications
- Connection of cooling water or external cooling for work below ambient temperature



- Mini-USB interface as standard
- Upper module slot: Analog, RS 232/485, contact, Profibus, Ethernet, EtherCAT module, to insert as an accessory
- Lower module slot: Pt100/LiBus module as accessory

- Computer connection and easy software updates
- Provides user with flexible control options
- Precise control of external applications
- Command remote control via LiBus



- Drain valves standard on all heating and cooling thermostats with stainless steel baths at the back of the devices

- Easy and safe changing of heat transfer liquids

ECO Control head Silver

The control heads Silver with 2.0 kW heater power (230 V) are now perfectly suited for thermostating tasks up to 200 °C. They are fitted with a monochrome LCD display.



Silver

- 2.0 kW heater power (230 V), working temperature range up to 200 °C
- LCD display, resolution of indication 0.01 °C
- Operation via cursor and softkeys
- Simultaneous display of set and actual temperature, navigation in plain text
- Selectable operating temperature range and additional button for overtemperature protection setting
- Safety class III, FL for flammable liquids
- 1-point calibration by the user
- Programmer with one program and 20 segments
- Vario pump with six levels, flow rate switch for internal or external circulation
- Mini-USB interface as standard

ECO Control head Gold

The control heads Gold with a heating power of 2,6 kW (230 V) have a working temperature range of up to 200 °C. They are provided with a larger colored TFT display. Temperature profiles can be displayed graphically. A comprehensive programmer with five programs and 150 temperature-time segments is a further distinctive feature compared to Silver.



Gold

- 2.6 kW heater power (230 V), working temperature range up to 200 °C
- Colored TFT display, resolution of indication 0.01 °C
- Operation via cursor and softkeys
- Simultaneous display of set and actual temperature, navigation in plain text
- Selectable operating temperature range and additional button for overtemperature protection setting
- Safety class III, FL for flammable liquids
- 1-point calibration by the user
- Graphical display of temperature profiles
- Programmer with five programs and 150 segments
- Vario pump with six levels, flow rate switch for internal or external circulation
- Mini-USB interface as standard

ECO

Immersion thermostats

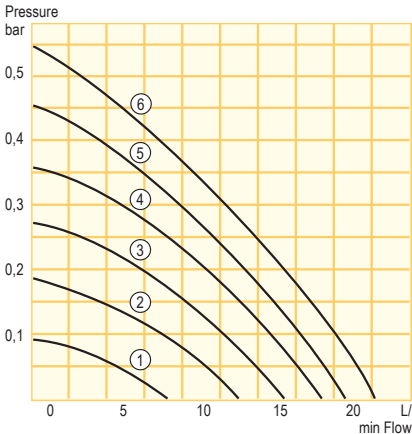
The ECO immersion thermostats can be used for any bath with a wall thickness of up to 30 mm and a bath depth of at least 150 mm by means of the screw clamp included in the scope of delivery.



Immersion thermostat Gold



Pump characteristics Heat transfer liquid: Water



- ① Step 1
- ② Step 2
- ③ Step 3
- ④ Step 4
- ⑤ Step 5
- ⑥ Step 6

Temperature range
20...200 °C

Included accessories
Screw clamp

Additional accessories
Baths · cooling coil · pump connection set · Interface modules:
analog, RS 232/485, contact, Profibus, Ethernet, EtherCAT,
Pt100/LiBus module



All technical data on page 96 and following
Other power supply variants on page 110



325 mm



325 mm

Technical features		Silver	Gold
Working temperature range	°C	20...200	20...200
Temperature stability	±K	0.01	0.01
Heater power	kW	2.0	2.6
Pump pressure max.	bar	0.55	0.55
Pump flow max.	L/min	22	22
Bath depth	mm	Min. 150	Min. 150
Cat. No.	230 V; 50/60 Hz	LCE 0227	LCE 0228

LAUDA ECO

ECO

Heating thermostats with stainless steel bath and control head Silver

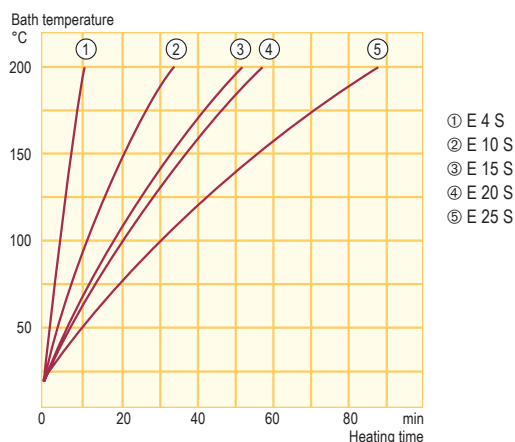
The heating thermostats with control head Silver are suitable for a temperature range of up to 200 °C. All heating thermostats are equipped with a cooling coil as standard. The E 4 S is fitted with a bath cover and pump connections for external applications with nipples made from plastic.



Heating thermostat E 4 S



Heating curves Heat transfer liquid: Therm 240, bath closed



Pump characteristics on page 23

Temperature range

20...200 °C

Included accessories

Cooling coil · bath cover and pump connections with 13 mm plastic nipples and closing plugs (E 4 S only)

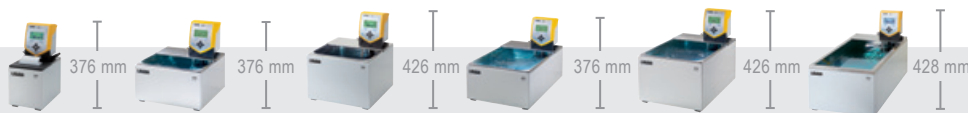
Additional accessories

Hoses · bath covers · pump circulation set ·
Interface modules: analog, RS 232/485, contact, Profibus, Ethernet, EtherCAT, Pt100/LiBus module · Command remote control



All technical data on page 96 and following

Other power supply variants on page 110



Technical features		E 4 S	E 10 S	E 15 S	E 20 S	E 25 S	E 40 S
Working temperature range	°C	20...200	20...200	20...200	20...200	20...200	20...200
Temperature stability	±K	0.01	0.01	0.01	0.01	0.01	0.01
Heater power	kW	2.0	2.0	2.0	2.0	2.0	2.0
Pump pressure max.	bar	0.55	0.55	0.55	0.55	0.55	0.55
Pump flow max.	L/min	22	22	22	22	22	22
Bath volume	L	3...3.5	7.5...11	12...16	13...19	16...25	32...40
Bath opening/depth	mm	135x105/150	300x190/150	300x190/200	300x365/150	300x365/200	300x613/200
Cat. No. 230 V; 50/60 Hz		LCB 0736	LCB 0738	LCB 0740	LCB 0742	LCB 0744	LCB 0746

ECO

Heating thermostats with stainless steel bath and control head Gold

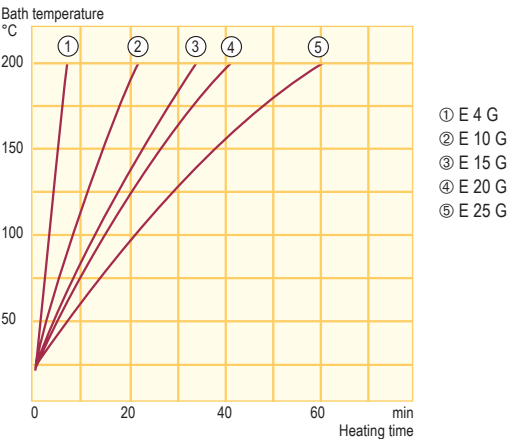
The heating thermostats with control head Gold can be used in a temperature range of up to 200 °C. All heating thermostats are equipped with a cooling coil as standard. The E 4 G is fitted with a bath cover and pump connections for external applications with M16 x 1 threads.



Heating thermostat E 20 G



Heating curves Heat transfer liquid: Therm 240, bath closed



Pump characteristics on page 23

Temperature range
20...200 °C

Included accessories

Cooling coil · bath cover and pump connection set with M16 x 1 thread (E 4 G only)

Additional accessories

Hoses · bath covers · pump circulation set ·
Interface modules: analog, RS 232/485, contact, Profibus, Ethernet, EtherCAT, Pt100/LiBus module · Command remote control



All technical data on page 96 and following
Other power supply variants on page 110



376 mm 376 mm 426 mm 376 mm 426 mm 428 mm

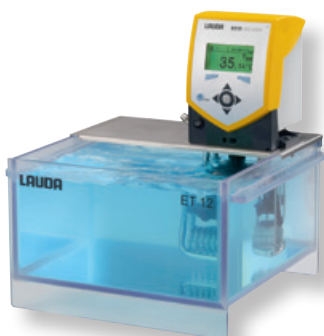
Technical features		E 4 G	E 10 G	E 15 G	E 20 G	E 25 G	E 40 G
Working temperature range	°C	20...200	20...200	20...200	20...200	20...200	20...200
Temperature stability	±K	0.01	0.01	0.01	0.01	0.01	0.01
Heater power	kW	2.6	2.6	2.6	2.6	2.6	2.6
Pump pressure max.	bar	0.55	0.55	0.55	0.55	0.55	0.55
Pump flow max.	L/min	22	22	22	22	22	22
Bath volume	L	3...3.5	7.5...11	12...16	13...19	16...25	32...40
Bath opening/depth	mm	135x105/150	300x190/150	300x190/200	300x365/150	300x365/200	300x613/200
Cat. No. 230 V; 50/60 Hz		LCB 0737	LCB 0739	LCB 0741	LCB 0743	LCB 0745	LCB 0747

LAUDA ECO

ECO

Heating thermostats with transparent bath and control head Silver and Gold

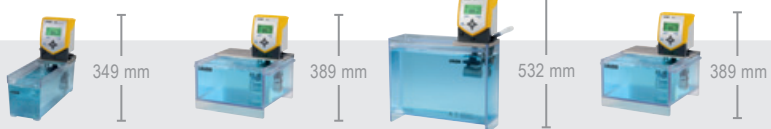
LAUDA ECO units with transparent plastic baths provide the necessary visibility in all cases where test samples need to be observed during thermostating. The thermostats with baths made from polycarbonate can be used in the temperature range of up to 100 °C. They have a filling volume of 5 up to 20 liters.



Heating thermostat ET 12 S



All technical data on page 96 and following
Other power supply variants on page 110



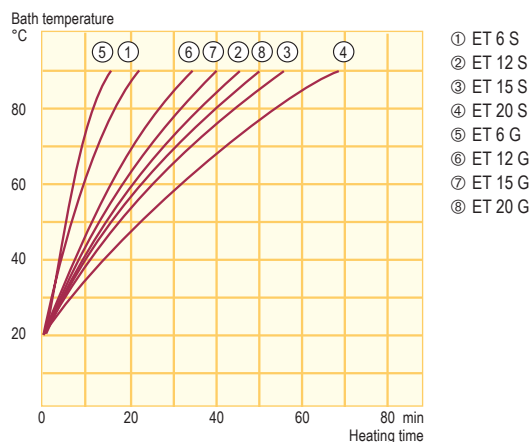
Technical features		ET 6 S	ET 12 S	ET 15 S	ET 20 S
Working temperature range	°C	20...100	20...100	20*...100	20...100
Temperature stability	±K	0.01	0.01	0.01	0.01
Heater power	kW	2.0	2.0	2.0	2.0
Pump pressure max.	bar	0.55	0.55	0.55	0.55
Pump flow max.	L/min	22	22	22	22
Bath volume	L	5...6	9.5...12	15	15...20
Bath opening/depth	mm	130x285/160	300x175/160	275x130/310	300x350/160
Cat. No. 230 V; 50/60 Hz		LCM 0096	LCD 0286	LCD 0288	LCD 0290

Technical features		ET 6 G	ET 12 G	ET 15 G	ET 20 G
Working temperature range	°C	20...100	20...100	20*...100	20...100
Temperature stability	±K	0.01	0.01	0.01	0.01
Heater power	kW	2.6	2.6	2.6	2.6
Pump pressure max.	bar	0.55	0.55	0.55	0.55
Pump flow max.	L/min	22	22	22	22
Bath volume	L	5...6	9.5...12	15	15...20
Bath opening/depth	mm	130x285/160	300x175/160	275x130/310	300x350/160
Cat. No. 230 V; 50/60 Hz		LCM 0097	LCD 0287	LCD 0289	LCD 0291

* Possible with external cooling



Heating curves Heat transfer liquid: Water, bath closed



Pump characteristics on page 23

Temperature range

20...100 °C

Included accessories

Cooling coil (not for ET 15 S/G) · closing plugs · pump connection set with 13 mm plastic nipples (ET 15 S) or M16 x 1 thread (ET 15 G)

Additional accessories

Hoses · Interface modules: analog, RS 232/485, contact, Profibus, Ethernet, EtherCAT, Pt100/LiBus module · Command remote control

ECO

Air-cooled cooling thermostats with control head Silver

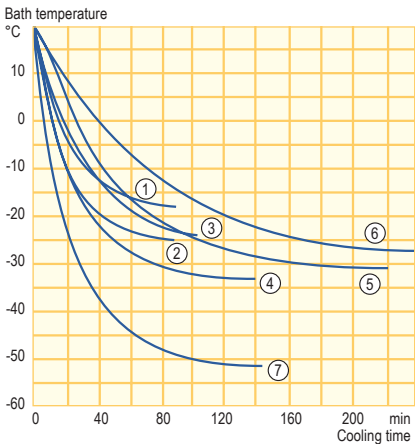
The cooling thermostats with control head Silver are available in the temperature range from -50 up to 200 °C. They are equipped with a bath cover and pump connections for external applications as standard. The pump connections are nipples made of high-quality plastic with an outer diameter of 13 mm. The RE 415 S is the basic model with minimized foot print. The RE 1050 SN with SmartCool digital cooling management can be used down to -50 °C and provides a cooling capacity of 700 W at 20 °C. Thanks to the larger baths, both models RE 1225 SN and RE 2025 SN are excellently suited to applications inside the bath.



Cooling thermostat RE 1050 SN



Cooling curves Heat transfer liquid: Ethanol, bath closed



- ① RE 415 S
- ② RE 420 SN
- ③ RE 620 SN
- ④ RE 630 SN
- ⑤ RE 1225 SN
- ⑥ RE 2025 SN
- ⑦ RE 1050 SN

Pump characteristics on page 23

Temperature range
-50...200 °C

Included accessories
Bath cover · pump connections with 13 mm plastic nipples · closing plugs

Additional accessories
Hoses · Interface modules: analog, RS 232/485, contact, Profibus, Ethernet, EtherCAT, Pt100/LiBus module · Command remote control



All technical data on page 100 and following
Other power supply variants on page 112



Technical features		RE 415 S	RE 420 SN	RE 620 SN	RE 630 SN	RE 1050 SN	RE 1225 SN	RE 2025 SN
Working temperature range*	°C	-15...200	-20...200	-20...200	-30...200	-50...200	-25...200	-25...200
Temperature stability	±K	0.02	0.02	0.02	0.02	0.02	0.02	0.02
Heater power	kW	2.0	2.0	2.0	2.0	2.0	2.0	2.0
Cooling output at 20 °C	kW	0.18	0.2	0.2	0.3	0.7	0.3	0.3
Pump pressure max.	bar	0.55	0.55	0.55	0.55	0.55	0.55	0.55
Pump flow max.	L/min	22	22	22	22	22	22	22
Bath volume	L	3.3...4	3.3...4	4.6...5.7	4.6...5.7	8...10	9.3...12	14...20
Bath opening/depth	mm	130x105/160	130x105/160	150x130/160	150x130/160	200x200/160	200x200/200	300x350/160
Cat. No. 230 V; 50 Hz		LCK 1910	LCK 1940	LCK 1942	LCK 1944	LCK 1946	LCK 1948	LCK 1950

* Working temperature range is equal to ACC range

LAUDA ECO

ECO

Air-cooled cooling thermostats with control head Gold

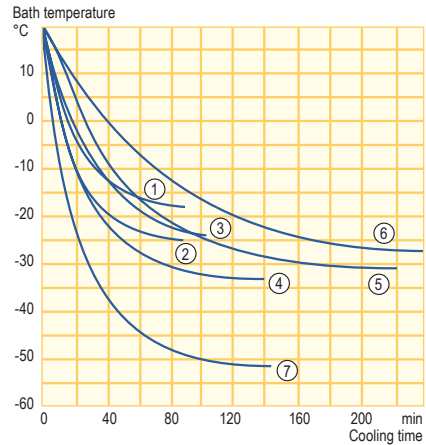
The cooling thermostats with control head Gold work up to 200 °C. Included as standard is a bath cover and pump connections made of stainless steel with M16 x 1 threads. The RE 1050 GN has an especially high cooling capacity and reaches temperatures down to -50 °C. The integrated Smart-Cool system ensures remarkable energy and cost savings. The RE 415 G with small foot print saves valuable laboratory space.



Cooling thermostat RE 1050 GN



Cooling curves Heat transfer liquid: Ethanol, bath closed



- ① RE 415 G
- ② RE 420 GN
- ③ RE 620 GN
- ④ RE 630 GN
- ⑤ RE 1225 GN
- ⑥ RE 2025 GN
- ⑦ RE 1050 GN

Pump characteristics on page 23

Temperature range

-50...200 °C

Included accessories

Bath cover · pump connections with M16 x 1 thread · closing plugs

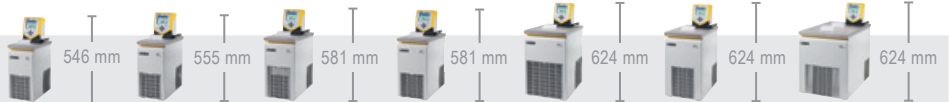
Additional accessories

Hoses · Interface modules: analog, RS 232/485, contact, Profibus, Ethernet, EtherCAT, Pt100/LiBus module · Command remote control



All technical data on page 110 and following

Other power supply variants on page 112



Technical features		RE 415 G	RE 420 GN	RE 620 GN	RE 630 GN	RE 1050 GN	RE 1225 GN	RE 2025 GN
Working temperature range*	°C	-15...200	-20...200	-20...200	-30...200	-50...200	-25...200	-25...200
Temperature stability	±K	0.02	0.02	0.02	0.02	0.02	0.02	0.02
Heater power	kW	2.6	2.6	2.6	2.6	2.6	2.6	2.6
Cooling output at 20 °C	kW	0.18	0.2	0.2	0.3	0.7	0.3	0.3
Pump pressure max.	bar	0.55	0.55	0.55	0.55	0.55	0.55	0.55
Pump flow max.	L/min	22	22	22	22	22	22	22
Bath volume	L	3.3...4	3.3...4	4.6...5.7	4.6...5.7	8...10	9.3...12	14...20
Bath opening/depth	mm	130x105/160	130x105/160	150x130/160	150x130/160	200x200/160	200x200/200	300x350/160
Cat. No. 230 V; 50 Hz		LCK 1911	LCK 1941	LCK 1943	LCK 1945	LCK 1947	LCK 1949	LCK 1951

* Working temperature range is equal to ACC range

ECO

Water-cooled cooling thermostats with control head Silver and Gold

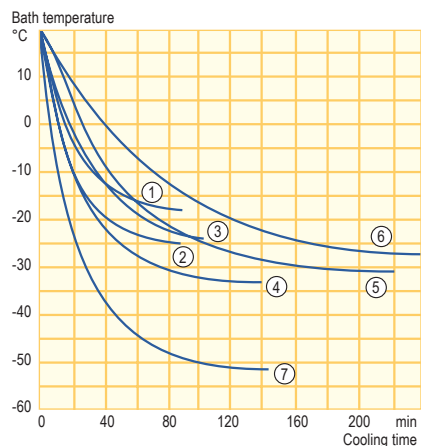
The cooling thermostats with control heads Silver and Gold are also available as water cooled models. By discharging process heat to the cooling water, heating-up of the environment will be reduced. This is an advantage when using several devices or at high ambient temperatures.



Cooling thermostat RE 1050 GWN



Cooling curves Heat transfer liquid: Ethanol, bath closed



- ① RE 415 SW
RE 415 GW
- ② RE 420 SWN
RE 420 GWN
- ③ RE 620 SWN
RE 620 GWN
- ④ RE 630 SWN
RE 630 GWN
- ⑤ RE 1225 SWN
RE 1225 GWN
- ⑥ RE 2025 SWN
RE 2025 GWN
- ⑦ RE 1050 SWN
RE 1050 GWN

Pump characteristics on page 23

Temperature range
-50...200 °C

Included accessories

Bath cover · pump connections with 13 mm plastic nipples (Silver) or M16 x 1 thread (Gold) and 13 mm nipples · closing plugs

Additional accessories

Hoses · Interface modules: analog, RS 232/485, contact, Profibus, Ethernet, EtherCAT, Pt100/LiBus module · Command remote control



All technical data on page 100, 102 and following
Other power supply variants on page 112

Technical features		RE 415 SW	RE 420 SWN	RE 620 SWN	RE 630 SWN	RE 1050 SWN	RE 1225 SWN	RE 2025 SWN
Working temperature range*	°C	-15...200	-20...200	-20...200	-30...200	-50...200	-25...200	-25...200
Temperature stability	±K	0.02	0.02	0.02	0.02	0.02	0.02	0.02
Heater power	kW	2.0	2.0	2.0	2.0	2.0	2.0	2.0
Cooling output at 20 °C	kW	0.18	0.2	0.2	0.3	0.7	0.3	0.3
Pump pressure max.	bar	0.55	0.55	0.55	0.55	0.55	0.55	0.55
Pump flow max.	L/min	22	22	22	22	22	22	22
Bath volume	L	3.3...4	3.3...4	4.6...5.7	4.6...5.7	8...10	9.3...12	14...20
Bath opening/depth	mm	130x105/160	130x105/160	150x130/160	150x130/160	200x200/160	200x200/200	300x350/160
Cat. No. 230 V; 50 Hz		LCK 1924	LCK 1954	LCK 1956	LCK 1958	LCK 1960	LCK 1962	LCK 1964

Technical features		RE 415 GW	RE 420 GWN	RE 620 GWN	RE 630 GWN	RE 1050 GWN	RE 1225 GWN	RE 2025 GWN
Working temperature range*	°C	-15...200	-20...200	-20...200	-30...200	-50...200	-25...200	-25...200
Temperature stability	±K	0.02	0.02	0.02	0.02	0.02	0.02	0.02
Heater power	kW	2.6	2.6	2.6	2.6	2.6	2.6	2.6
Cooling output at 20 °C	kW	0.18	0.2	0.2	0.3	0.7	0.3	0.3
Pump pressure max.	bar	0.55	0.55	0.55	0.55	0.55	0.55	0.55
Pump flow max.	L/min	22	22	22	22	22	22	22
Bath volume	L	3.3...4	3.3...4	4.6...5.7	4.6...5.7	8...10	9.3...12	14...20
Bath opening/depth	mm	130x105/160	130x105/160	150x130/160	150x130/160	200x200/160	200x200/200	300x350/160
Cat. No. 230 V; 50 Hz		LCK 1925	LCK 1955	LCK 1957	LCK 1959	LCK 1961	LCK 1963	LCK 1965

* Working temperature range is equal to ACC range

LAUDA ECO

ECO accessories (excerpt)

ECO transparent baths up to 100 °C

Transparent baths made of polycarbonate in order to view the objects being subjected to thermostating

Cat. No.	Description	Volume max. L	Int. dimensions (WxDxH)
LCZ 0703	6 T	6	130x420x160
LCZ 0704	12 T	12	300x315x160
LCZ 0705	15 T	15	416x130x310
LCZ 0706	20 T	20	300x490x160

ECO stainless steel baths up to 200 °C

The insulated baths made from stainless steel can be used up to 200 °C. All stainless steel baths are equipped with a built in drain tap. The outer jacket is made of powder-coated sheet steel.

Cat. No.	Description	Volume max. L	Int. dimensions (WxDxH)
LCZ 0707	B 4	3,5	135x240x150
LCZ 0708	B 10	11	300x329x150
LCZ 0709	B 15	16	300x329x200
LCZ 0710	B 20	19	300x505x150
LCZ 0711	B 25	25	300x505x200
LCZ 0712	B 40	40	300x750x200

Cooling coil set

For cooling of any heating baths

Cat. No.	Description	Suitable for
LCZ 0719	Cooling coil set ET 15, connectors to the right side	ET 15 S, ET 15 G

Bath covers

Cat. No.	Description	Suitable for
HDQ 133	Bath cover, stainless steel	E 10 S, E 10 G, E 15 S, E 15 G
HDQ 134	Bath cover, stainless steel	E 20 S, E 20 G, E 25 S, E 25 G
LCZ 0718	Bath cover, stainless steel	E 40 S, E 40 G (three pieces)

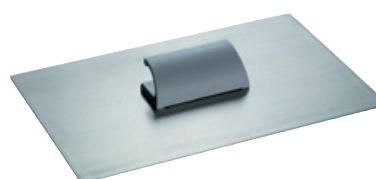
Pump connection sets

For thermostating of external applications. Both pump connection sets are usable with ECO Silver and ECO Gold.

Cat. No.	Description
LCZ 0716	With 13 mm plastic nipples
LCZ 0717	With M16 x 1 stainless steel connections, screw caps and 13 mm nipples



LCZ 0719



HDQ 133



LCZ 0716

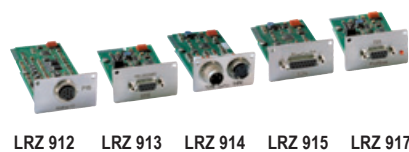


LCZ 0717

ECO accessories (excerpt)

Interface modules

Cat. No.	Description	Suitable for
LRZ 912	Analog module	Upper module slot
LRZ 913	RS 232/485 interface	Upper module slot
LRZ 914	Contact module with 1 input and 1 output	Upper module slot
LRZ 915	Contact module with 3 inputs and 3 outputs	Upper module slot
LRZ 917	Profibus module	Upper module slot
LRZ 918	Pt100/LiBus module	Lower module slot
LRZ 921	Ethernet module	Upper module slot
LRZ 922	EtherCAT module with M8 connection	Upper module slot
LRZ 923	EtherCAT module with RJ45 connection	Upper module slot
LCZ 9727	Module box with LiBus for 2 modules	LiBus module



LRZ 912 LRZ 913 LRZ 914 LRZ 915 LRZ 917



LRZ 918



LRZ 921



LRZ 922



LRZ 923



LCZ 9727

Command remote control

With RS 232/485 interface as standard

Cat. No.	Description
LRT 914	Command remote control with graphic LCD for remote control via LiBus. Only possible in combination with Pt100/LiBus module (LRZ 918)



LRT 914

Solenoid valve for cooling water control

Water-conscious cooling of heating thermostats

Cat. No.	Description	Temperature range
LCZ 9664	Solenoid valve with LiBus-connector	-10...155 °C



Order the detailed LAUDA accessories brochure and the heat transfer liquids brochure free of charge. These and additional product information can also be found at www.lauda.de

Temperature solutions:

Thermostats · Circulation chillers · Water baths

Process cooling systems · Heat transfer systems · Secondary circuit systems



**LAUDA DR. R. WOBSE
GMBH & CO. KG**
Headquarters
Pfarrstraße 41/43
97922 Lauda-Königshofen
Germany
Phone: +49 (0)9343 503-0
E-mail: info@lauda.de



LAUDA-Noah, LP
308 Digital Drive
Morgan Hill, CA 95037
USA
Tel.: +1 360 993 1395
E-mail: info@lauda-noah.com



LAUDA Technology Ltd.
4200 Waterside
Solihull Parkway
Birmingham Business Park
B37 7YN Birmingham
Great Britain
Phone: +44 121 717 4789
E-mail: info@lauda-technology.co.uk



LAUDA China Co. Ltd.
Shanghai
2nd floor, Building 6
No. 201 MinYi Road
Songjiang District
201612 Shanghai
China
Phone: +86 21 64401098
E-mail: info@lauda.cn



LAUDA-Brinkmann, LP
1819 Underwood Boulevard
08075 Delran, NJ
USA
Phone: +1 856 7647300
E-mail: info@lauda-brinkmann.com



**LAUDA América Latina
Tecnologia Ltda.**
Av. Paulista, 726 – 17º andar – Cj. 1707
01310-910 – São Paulo – SP
Brazil
Phone: +55 11 3192-3904
E-mail: info@lauda.net.br



LAUDA France S.A.R.L.
Parc Technologique de Paris Nord II
Bâtiment G
69, rue de la Belle Etoile
BP 81050 Roissy en France
95933 Roissy Charles de Gaulle Cedex
France
Phone: +33 1 48638009
E-mail: info@lauda.fr



Office Beijing
15/F, Office Building A,
Parkview Green,
9 Dongdaqiao Road,
Chaoyang District
100020 Beijing
China
Phone: +86 10 57306210
E-mail: info@lauda.cn



LAUDA-Brinkmann, LP
308 Digital Drive
Morgan Hill, CA 95037
USA
Phone: +1 856 7647300
E-mail: info@lauda-brinkmann.com



LAUDA Ultracool S.L.
C/ Colom, 606
08228 Terrassa (Barcelona)
Spain
Phone: +34 93 7854866
E-mail: info@lauda-ultracool.com



LAUDA Italia S.r.l.
Strada 6 – Palazzo A – Scala 13
20090 Assago Milanofiori (MI)
Italy
Phone: +39 02 9079194
E-mail: info@lauda-italia.it



LAUDA Singapore Pte. Ltd.
25 International Business Park
#04-103M German Centre
Singapore 609916
Phone: +65 6563 0241
E-mail: info@lauda.sg



LAUDA-Noah, LP
2501 SE Columbia Way, Suite 140
Vancouver, WA 98661
USA
Tel.: +1 360 993 1395
E-Mail: info@lauda-noah.com



**LAUDA IBÉRICA SOLUCIONES
TÉCNICAS, S.L.**
C/ Colom, 606
08228 Terrassa (Barcelona)
Spain
Phone: +34 93 7854866
E-mail: info@lauda-iberica.es



OOO „LAUDA Wostok“
Malaja Pirogowskaja Str. 5
119435 Moscow
Russia
Phone: +7 495 9376562
E-mail: info@lauda.ru

LAUDA DR. R. WOBSE GMBH & CO. KG
Pfarrstraße 41/43 · 97922 Lauda-Königshofen · Germany
Phone: +49 (0)9343 503-0 · Fax: +49 (0)9343 503-222
E-mail: info@lauda.de · Internet: www.lauda.de